

Barcode Singles 1D

Version 5.x

1D Barcode Font Kits - PC Format

Important Note:

Barcode fonts can not be used to simply apply to a string of data characters/digits.
The Result may look like a barcode, but it will NOT work, and NOT scan!

Fonts v Graphics

Barcodes made from fonts give great flexibility to produce unlimited variable barcodes, however the barcode data "Strings" need some sort of encoding, sometimes simple, sometimes complex.

A Graphics option is provided in the Windows Utility, suitable when requiring a smaller number of barcode images, or infrequent usage.

Windows Utility

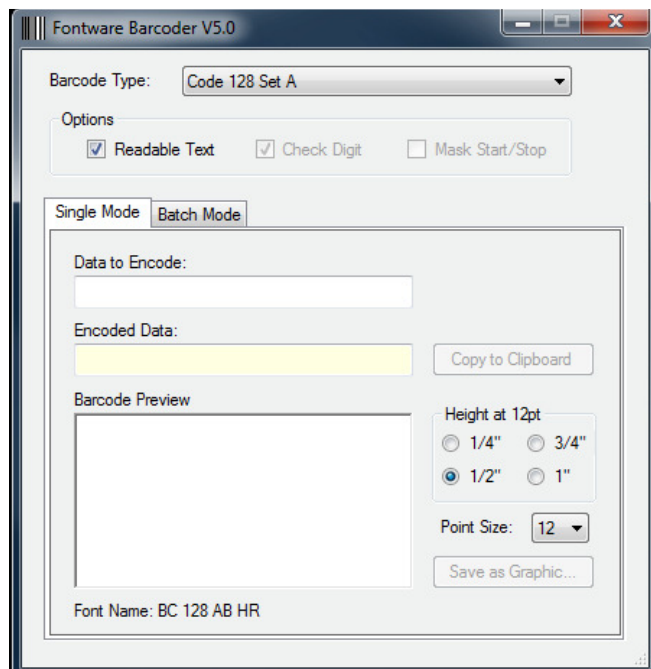
Barcoder.exe

This program allows you to create an encoded barcode strings, displays the barcodes, and place in the "cut & paste" buffer.

You can select available options, heights, Point Sizes and Preview the Barcode being produced

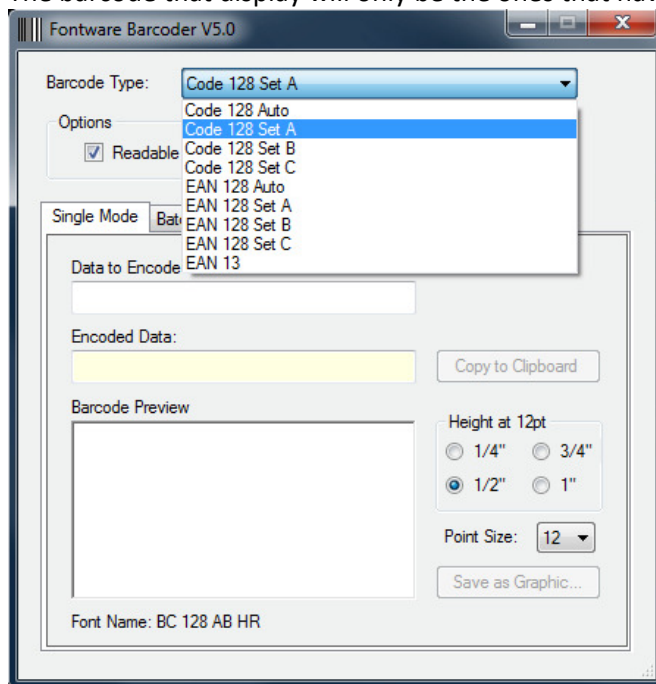
Paste your barcode into other applications, generate a graphic image if required, or even convert a batch file of data strings.

Main Screen



Barcode type selector

The barcode that display will only be the ones that have been installed



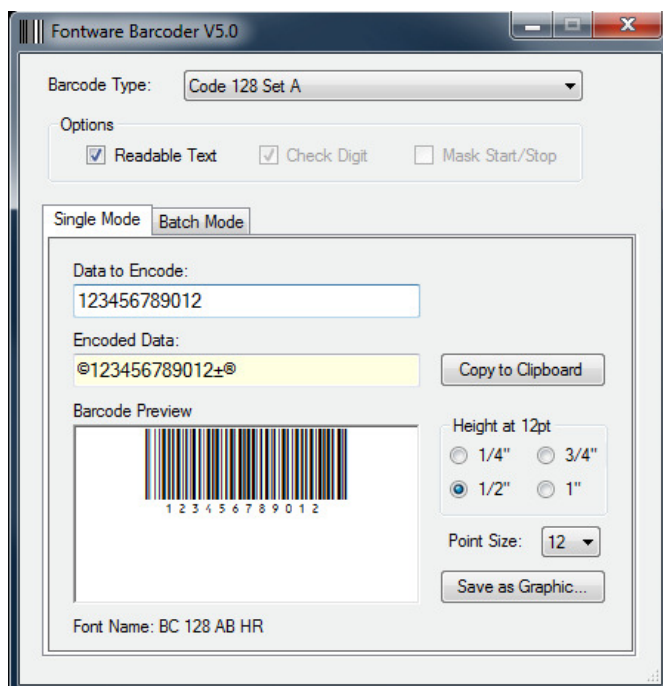
Available options / presets

These options will display differing options depending on barcode type

Certain options will be available to select, or will force mandatory pre-selects

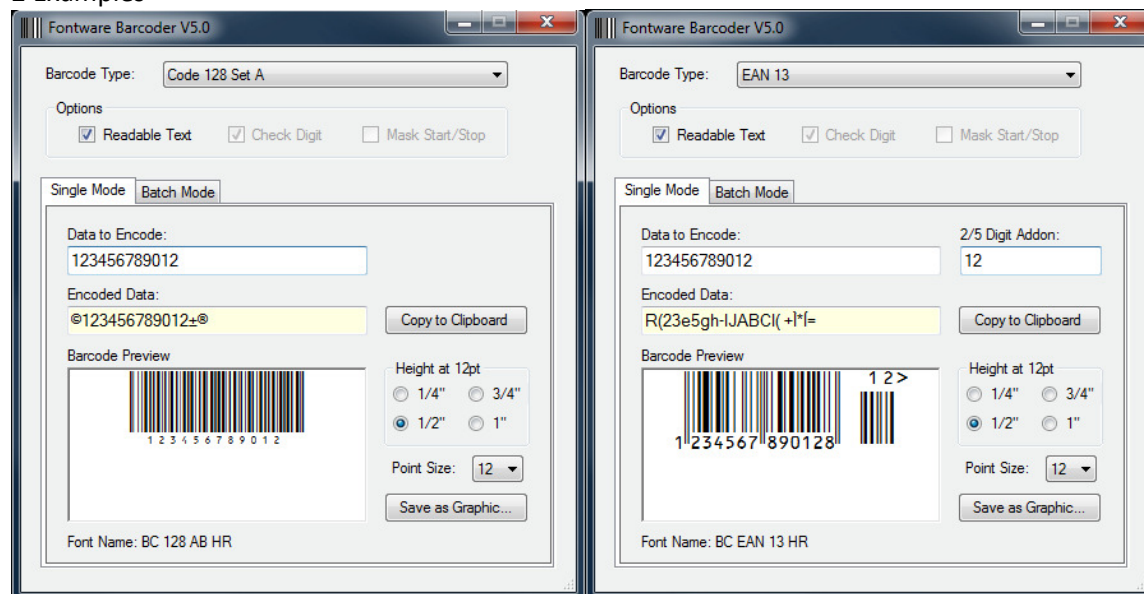
Singles Mode

This is the main mode to generate Single Barcodes for use



Encoding Windows

2 Examples



Data to Encode

This is your barcode data string, digits or alphanumeric, depending on Barcode type. The window will show if input format errors have been entered.

Code 128/Ean 128 may need Special Characters, these can be entered in this box by using Right Mouse click and select the required character or by entering the decimal value of the character preceded by a tilde, i.e. the FF Character, (Formfeed) is entered as ~012

Encoded data

This is the encoded data string, that is used, sometimes with Start/Stop/Checksum characters, Sometimes as an encoded data String, depending on barcode type.

Preview Window

This show the resultant barcode, applied with current settings.

Height Options

Options to change to 1 of the 4 different height options, (at the same width) ¼ ½ ¾ and 1 Inch available when set at 12 Point.

Point Size

Allows scaling by Point size, in both horizontal and vertical settings

Font Name

Shows the Font name of the Font being used for the Barcode as a reference.

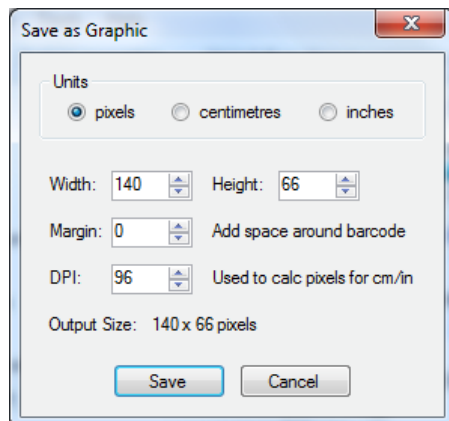
Copy to Clipboard

Data is automatically added to clipboard, ready to paste to other applications.

Help (Barcode Icon, top left), About will show version number and Link to web site.

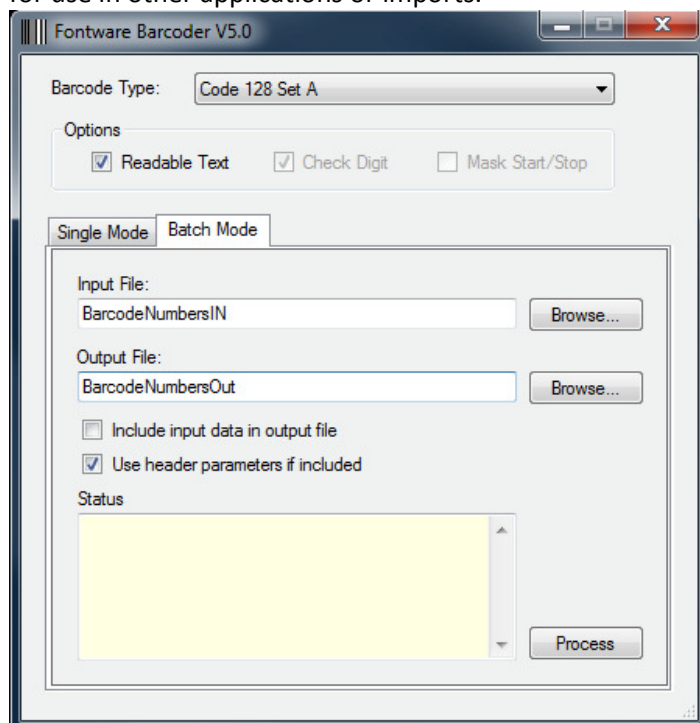
Save as graphic

This screen allows selection of sizes, and White border margin.
Save Option allows saving as .PNG, .JPG format



Batch Mode

This mode is available to encode a file of data strings into a file of barcode ready encode data strings for use in other applications or imports.



Requires Input file in correct format
Allows specialist input format controls
Output is written to filename
Simple options
Status Window will show progress of conversion.

Input data file will contain Strings that need converting for barcode type.
The Settings for the barcode type will be taken from the current settings in the Barcoder program

These can be over-ridden with Batch control codes

Syntax for control codes in batch files

~~barcode=code39

~~barcode=interleaved2of5

~~barcode=opccode

~~barcode=itf14

~~barcode=ean8

~~barcode=ean13

~~barcode=upca

~~barcode=upce

~~barcode=code128auto

~~barcode=code128seta

~~barcode=code128setb

~~barcode=code128setc

~~barcode=ean128auto

~~barcode=ean128seta

~~barcode=ean128setb

~~barcode=ean128setc

~~HR=0 or 1

~~check =0 or 1

~~mask=0 or 1

0=off, 1=on

For EAN8, EAN13, UPC-A and UC-E data can include a ~ which separates the main and addon data i.e.

EAN8 - 12345678~12, EAN13 – 123456789012~12

Within data where appropriate the following codes can be inserted:

^F1, ^F2, ^F3 or ^F4 = FNC1 to FNC4

^CA, ^CB and ^CC = Change to Code Set A, B & C

^SH = Shift

~nnn where nnn is a three digit decimal number.

Error handling is taken care of and displayed in the Output file so data can be corrected.

A summary of progress is displayed in the status screen.

About Fontware

Formed in 1987, Fontware Ltd is a UK based Company supplying innovative corporate solution.

Our world-class software & hardware products are used each day by thousands of customers in over 50 different countries

Fontware Ltd

25 Barnes Wallis Road, Segensworth East, Fareham, Hampshire, PO15 5TT, UK.

Telephone: +44 (0)1489 505075 Fax: +44 (0)8700 515816 - www.fontware.com - sales@fontware.com